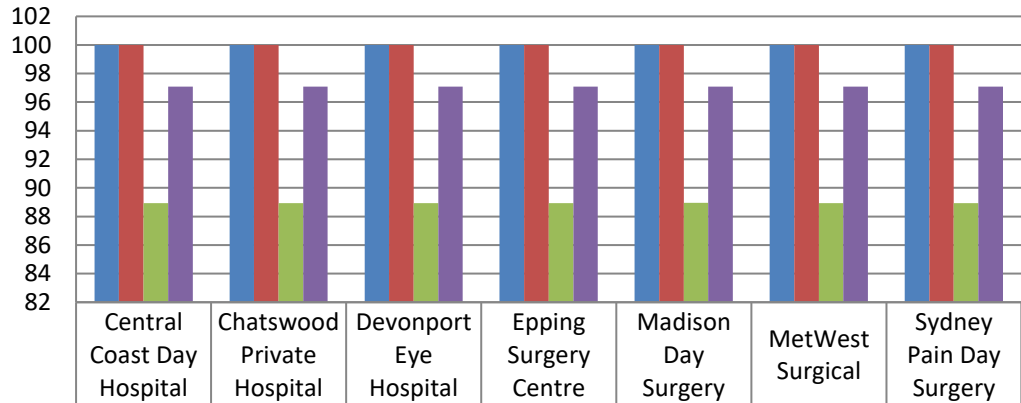




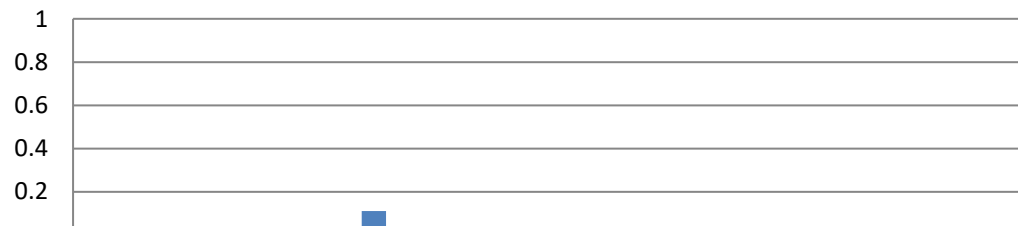
Devonport Private Hospital (DEH) is a part of the PresMed Australia (PMA) group of day hospitals. The DEH and PMA group are members of the Australian Council on Healthcare Standards (ACHS) along with other public and private health facilities across Australia. Every six months, all PMA facilities submit clinical outcomes data to the ACHS to compare and benchmark our clinical care. This data is evaluated by staff, doctors and management to improve patient care, service delivery and quality improvement. Review of our data for the first half of 2023 demonstrates excellent results consistent with high standards of patient safety and clinical outcomes. Below are some key highlights:

Day Patient CI 1.1 Booked patients assessed before admission



	Central Coast Day Hospital	Chatswood Private Hospital	Devonport Eye Hospital	Epping Surgery Centre	Madison Day Surgery	MetWest Surgical	Sydney Pain Day Surgery
HCO Rate	100	100	100	100	100	100	100
Presmed Group Aggregate Rate	100	100	100	100	100	100	100
General Aggregate Rate	88.94	88.94	88.94	88.94	88.95	88.94	88.94
Private Peer Aggregate Rate	97.08	97.08	97.08	97.08	97.08	97.08	97.08

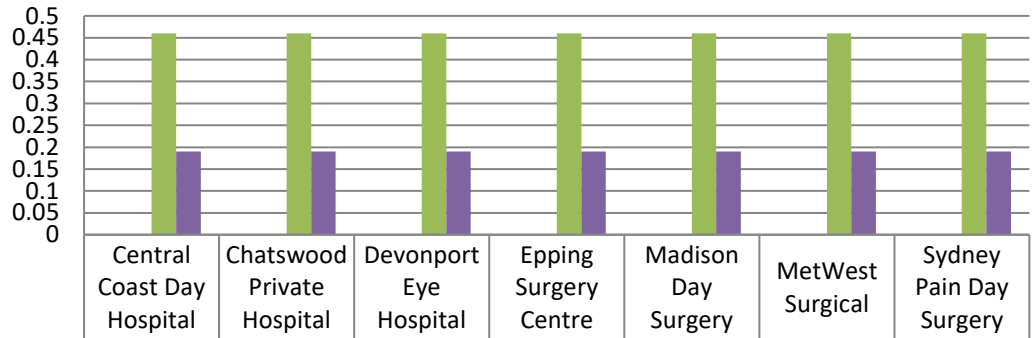
Day Patient CI 5.1: Unplanned return to operating room on same day as initial procedure



	Central Coast Day Hospital	Chatswood Private Hospital	Devonport Eye Hospital	Epping Surgery Centre	Madison Day Surgery	MetWest Surgical	Sydney Pain Day Surgery
HCO Rate	0	0.02	0.11	0	0	0	0
Presmed Group Aggregate Rate	0.016	0.016	0.016	0.016	0.016	0.016	0.016
General Aggregate Rate	0.034	0.03	0.03	0.03	0.03	0.03	0.03
Private Peer Aggregate Rate	0.01	0.01	0.01	0.01	0.01	0.01	0.01

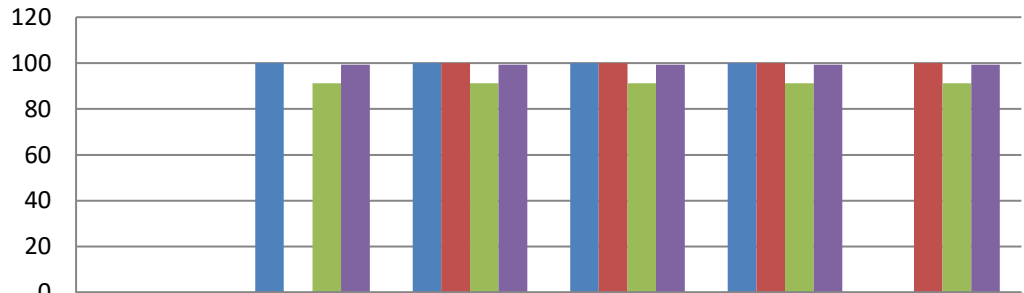


Day Patient CI 6.1: Unplanned transfer or overnight admission related to procedure



	Central Coast Day Hospital	Chatswood Private Hospital	Devonport Eye Hospital	Epping Surgery Centre	Madison Day Surgery	MetWest Surgical	Sydney Pain Day Surgery
HCO Rate	0	0	0	0	0	0	0
Presmed Group Aggregate Rate	0	0	0	0	0	0	0
General Aggregate Rate	0.46	0.46	0.46	0.46	0.46	0.46	0.46
Private Peer Aggregate Rate	0.19	0.19	0.19	0.19	0.19	0.19	0.19

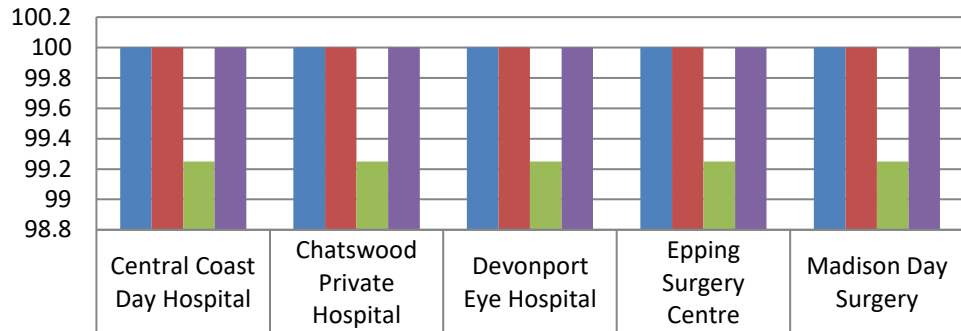
Day Patient CI 9.1 Follow-up contact within 48-hours



	Central Coast Day Hospital	Chatswood Private Hospital	Epping Surgery Centre	Madison Day Surgery	MetWest Surgical	Sydney Pain Day Surgery
HCO Rate	0	100	100	100	100	0
Presmed Group Aggregate Rate	0	0	100	100	100	100
General Aggregate Rate	0	91.24	91.24	91.24	91.24	91.24
Private Peer Aggregate Rate	0	99.25	99.25	99.25	99.25	99.25

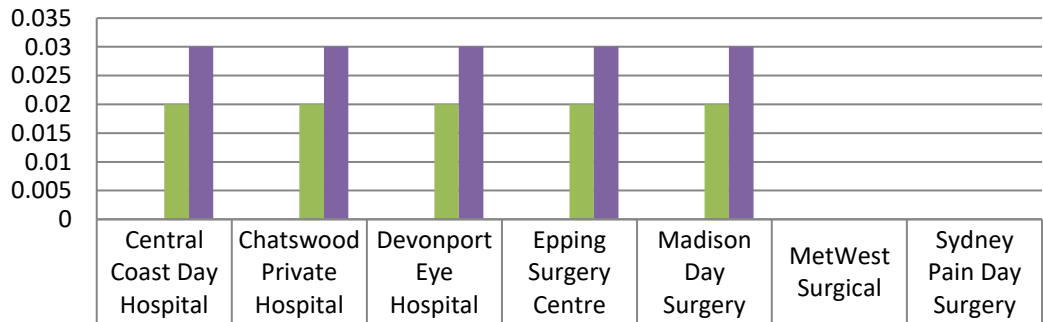


Day Patient CI 9.2 Completeness of follow-up instruction form for patients



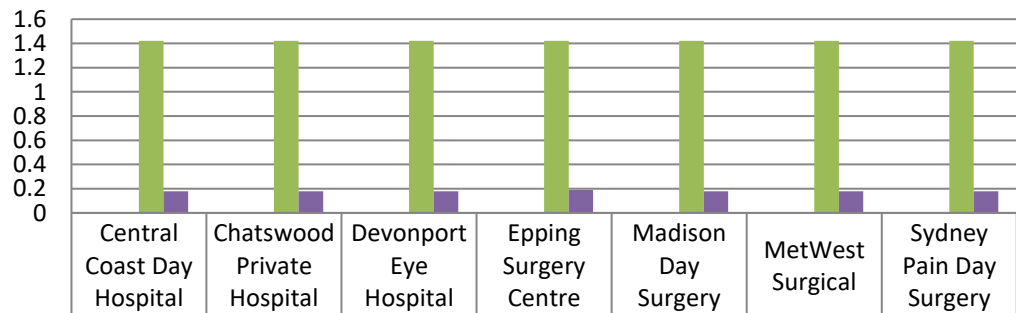
	Central Coast Day Hospital	Chatswood Private Hospital	Devonport Eye Hospital	Epping Surgery Centre	Madison Day Surgery
HCO Rate	100	100	100	100	100
Presmed Group Aggregate Rate	100	100	100	100	100
General Aggregate Rate	99.25	99.25	99.25	99.25	99.25
Private Peer Aggregate Rate	100	100	100	100	100

Ophthalmology CI 1.2 Cataract Surgery - Readmission within 28 days due to endophthalmitis



	Central Coast Day Hospital	Chatswood Private Hospital	Devonport Eye Hospital	Epping Surgery Centre	Madison Day Surgery	MetWest Surgical	Sydney Pain Day Surgery
HCO Rate	0	0	0	0	0	0	0
Presmed Group Aggregate Rate	0	0	0	0	0	0	0
General Aggregate Rate	0.02	0.02	0.02	0.02	0.02	0	0
Private Peer Aggregate Rate	0.03	0.03	0.03	0.03	0.03	0	0

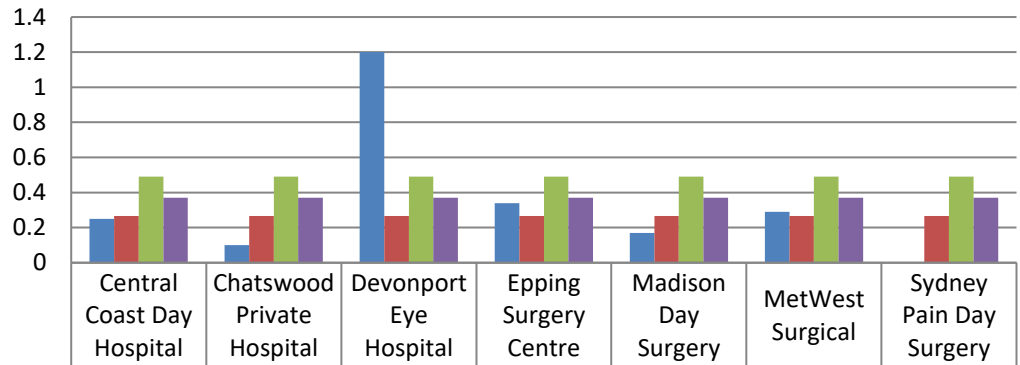
Ophthalmology CI 2.1 Intraocular glaucoma surgery - readmission within 28 days



	Central Coast Day Hospital	Chatswood Private Hospital	Devonport Eye Hospital	Epping Surgery Centre	Madison Day Surgery	MetWest Surgical	Sydney Pain Day Surgery
HCO Rate	0	0	0	0	0	0	0
Presmed Group Aggregate Rate	0	0	0	0	0	0	0
General Aggregate Rate	1.42	1.42	1.42	1.42	1.42	1.42	1.42
Private Peer Aggregate Rate	0.18	0.18	0.18	0.19	0.18	0.18	0.18

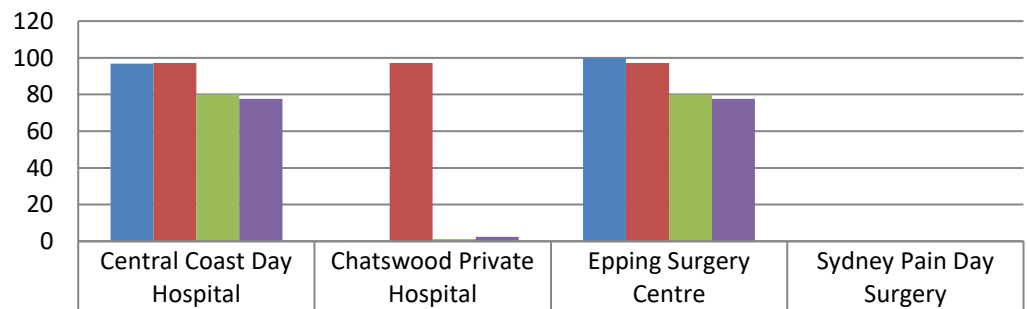


Ophthalmology CI 1.4 Cataract Surgery - Anterior Vitrectomy



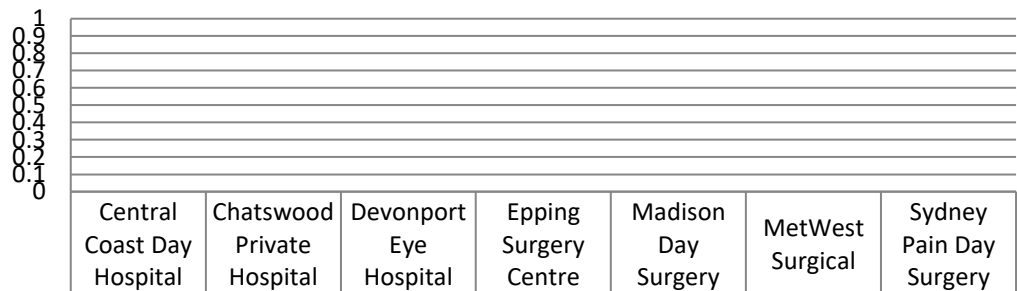
	Central Coast Day Hospital	Chatswood Private Hospital	Devonport Eye Hospital	Epping Surgery Centre	Madison Day Surgery	MetWest Surgical	Sydney Pain Day Surgery
HCO Rate	0.25	0.1	1.2	0.34	0.17	0.29	0
Presmed Group Aggregate Rate	0.267	0.267	0.267	0.267	0.267	0.267	0.267
General Aggregate Rate	0.49	0.49	0.49	0.49	0.49	0.49	0.49
Private Peer Aggregate Rate	0.37	0.37	0.37	0.37	0.37	0.37	0.37

Paediatrics CI 1.1 Registered nurses with paediatric basic life support qualifications



	Central Coast Day Hospital	Chatswood Private Hospital	Epping Surgery Centre	Sydney Pain Day Surgery
HCO Rate	96.77	0.02	100	0
Presmed Group Aggregate Rate	97.143	97.143	97.143	0
General Aggregate Rate	80.12	1.25	80.12	0
Private Peer Aggregate Rate	77.65	2.4	77.66	0

6.3 Medication Safety - Medication errors - adverse event requiring intervention



	Central Coast Day Hospital	Chatswood Private Hospital	Devonport Eye Hospital	Epping Surgery Centre	Madison Day Surgery	MetWest Surgical	Sydney Pain Day Surgery
HCO Rate	0	0	0	0	0	0	0
Presmed Group Aggregate Rate	0	0	0	0	0	0	0
General Aggregate Rate	0	0	0	0	0	0	0
Private Peer Aggregate Rate	0	0	0	0	0	0	0